



ScaleArmor™

**POP**

THE ULTIMATE ANTI-SCALE

**BLOCKS** SCALE  
**PROTECTS** PIPES  
**REDUCES** CONSUMPTIONS



# ScaleArmor™ POP

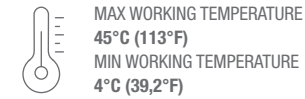
**BLOCKS SCALE - PROTECTS PIPES - REDUCES CONSUMPTIONS**

ScaleArmor™ POP is the system that prevents limescale build-up with proven effectiveness.

ScaleArmor™ POP prevents the formation of limescale and deposits on surfaces and also reduces pipe scale build-up.

It does not soften the water, but prevents the growth of calcium and magnesium carbonate crystals that form limescale.

ScaleArmor™ POP is a ready-to-use kit that contains: housing, cartridge, spanner, wall bracket, o-ring, lubricant and instructions.



MAX FLOW RATE  
POP 10: 1500 L/h (6.6 GPM)  
POP 20: 2300 L/h (10.1 GPM)

## BENEFIT

- PROVEN SCALE PREVENTION
- CONTINUOUS EFFECTIVENESS UP TO 12 MONTHS
- WORKS AT HIGHER TEMPERATURES
  - Max 45°C - 113°F | Min 4°C - 39.2°F
- ECOFRIENDLY:
  - REDUCES ENERGY CONSUMPTION
  - RECYCLABLE MATERIALS

## SPECIFICATIONS

Selected raw materials, suitable for drinking water.

Head: reinforced polypropylene.

Bowl: PET.

O-ring: EPDM.

Breather-valve: body stainless steel, o-ring EPDM.

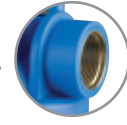
Gauge plug: CW 511 L brass.

Filter Media: ScaleArmor™.

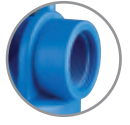


POP 10

THREADS TYPE



-OT-  
BRASS BSPP

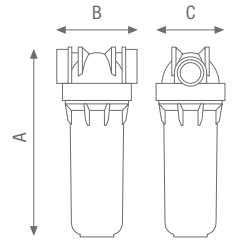


-IN-  
PLASTIC BSPP

ScaleArmor™ Systems



POP 20



## ACCESSORIES INCLUDED



-X- spanner

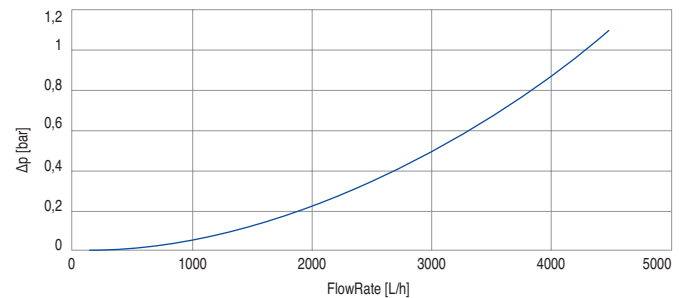


-S- wall bracket



lubriKit® single-dose lubricant for housing o-ring

Tests carried on ScaleArmor™ POP 10 System. Testing mode: 20°C, 3 BAR



## ScaleArmor™ POP

HOUSINGS WITH PLASTIC and BRASS BSPP THREADS

PART NUMBER	MODEL	SUITABLE CARTRIDGE	IN/OUT	MAX FLOW RATE	DIMENSIONS mm		
					A	B	C
ZA1380552	POP10 ScaleArmor™ System 3/4 IN	10"	3/4" plastic	1500 L/h	325	122	107
ZA1380532	POP10 ScaleArmor™ System 3/4 OT	10"	3/4" brass	1500 L/h	325	122	107
ZA1381552	POP20 ScaleArmor™ System 3/4 IN	20"	3/4" plastic	2300 L/h	577	122	107
ZA1381532	POP20 ScaleArmor™ System 3/4 OT	20"	3/4" brass	2300 L/h	577	122	107
ZA1380652	POP10 ScaleArmor™ System 1 IN	10"	1" plastic	1500 L/h	325	122	107
ZA1380632	POP10 ScaleArmor™ System 1 OT	10"	1" brass	1500 L/h	325	122	107
ZA1381652	POP20 ScaleArmor™ System 1 IN	20"	1" plastic	2300 L/h	577	122	107
ZA1381632	POP20 ScaleArmor™ System 1 OT	20"	1" brass	2300 L/h	577	122	107



REPLACEMENT CARTRIDGE AVAILABLE

PART NUMBER	MODEL
RA5195123	P 10 ScaleArmor™
RA5197123	P 20 ScaleArmor™

## CERTIFICATIONS:



Housings are tested and certified under the most stringent procedures worldwide, in compliance with the sanitary certifications DM25 -Italy- EAC/Ghostreghistracia -Russia- and ACS -France-



Scale Armor™ media is certified by IAPMO R&T against IAPMO Z601 for material safety requirement.