

# MECHANICAL FILTRATION

CONFIDENTIAL

~~**PURIFIER**~~

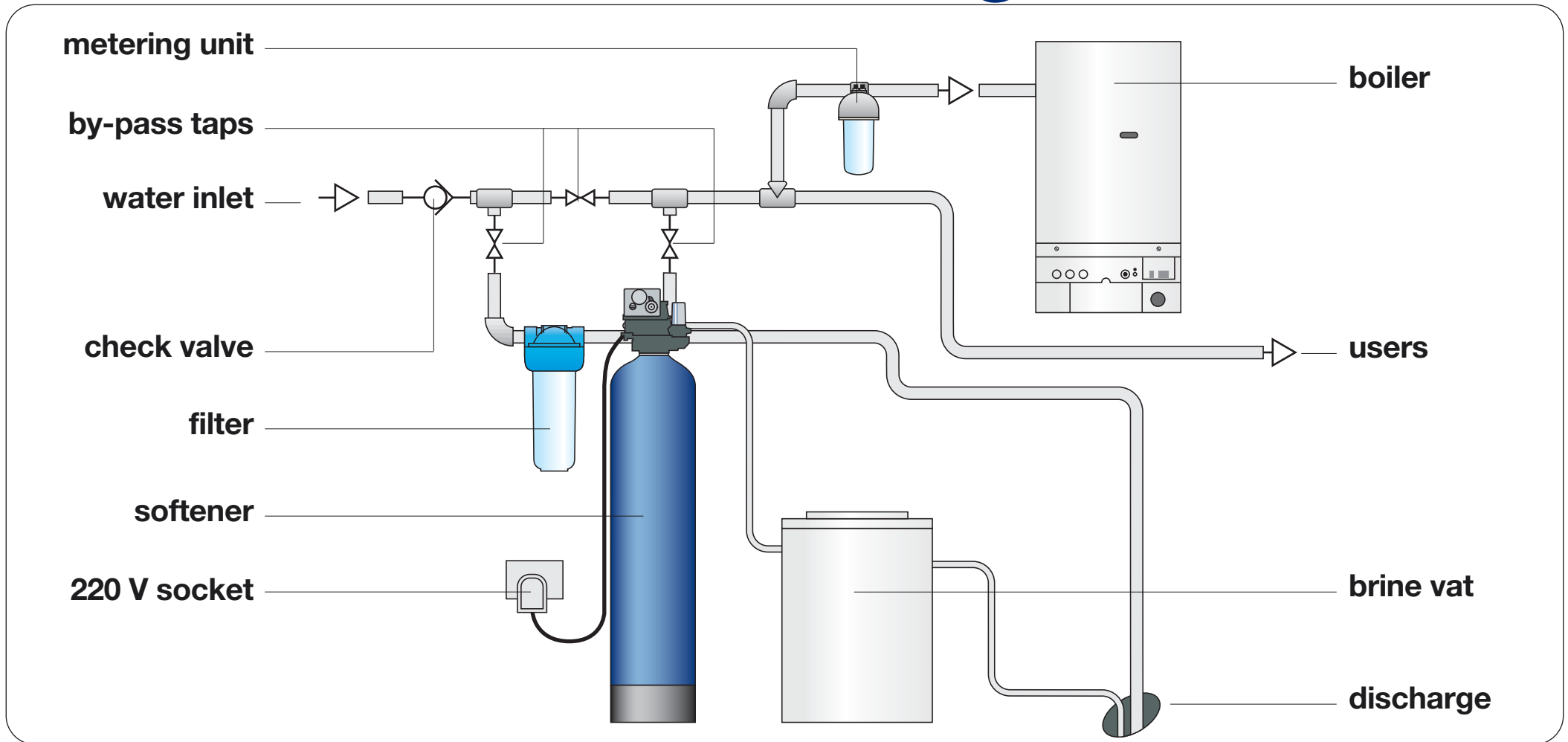
**every unit must be identified  
according to the its  
specific function**

# MECHANICAL FILTRATION

# Even the best water mains may contain:

- **particles** (for instance sand)
- **other solids resulting from the corrosion of pipes** (i.e. iron oxide flake)
- **chipping of deposits** (i.e. limescale)
- **processing residues** (i.e. iron chips and the like)

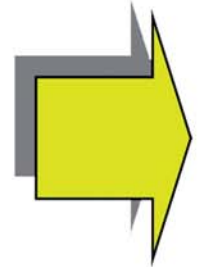
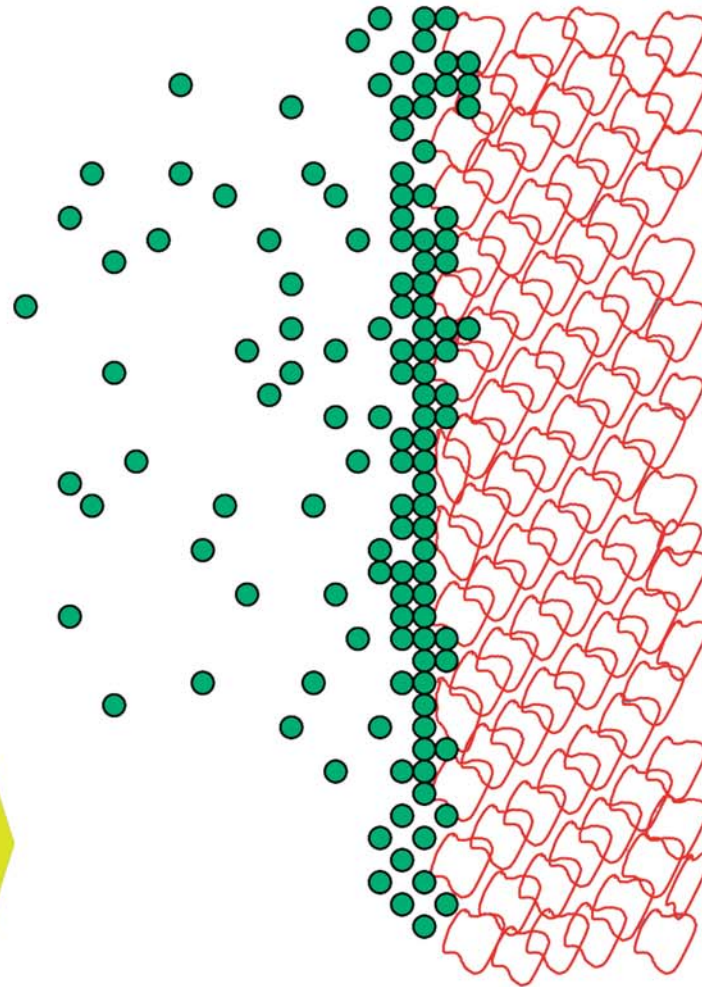
# Installation diagram



➤ **filtration = protection**

# impurities removed from the water

sand,  
iron oxide flake,  
limescale, iron chips,  
processing residues, etc.



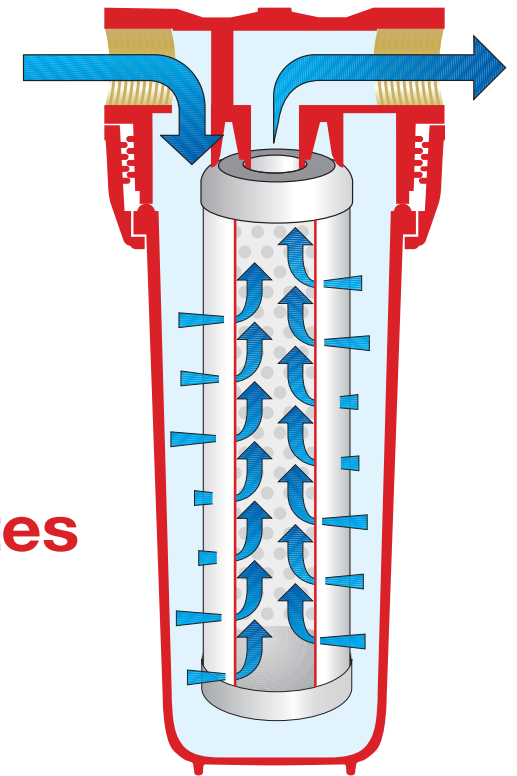
clean  
water out

› filtration principles

# Filter classification:

The quality of filtration depends on various factors

- **materials used**
- **pore diameter**
- **filtering surface**
- **capacity**
- **joined capacity of eliminating smells and tastes**
- **consistency in filtration quality**



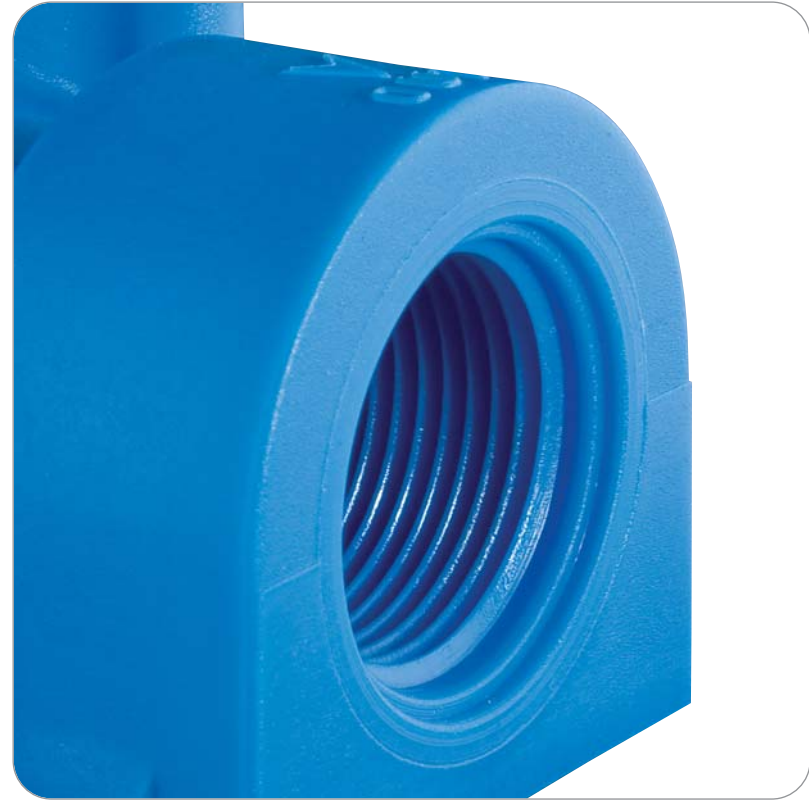
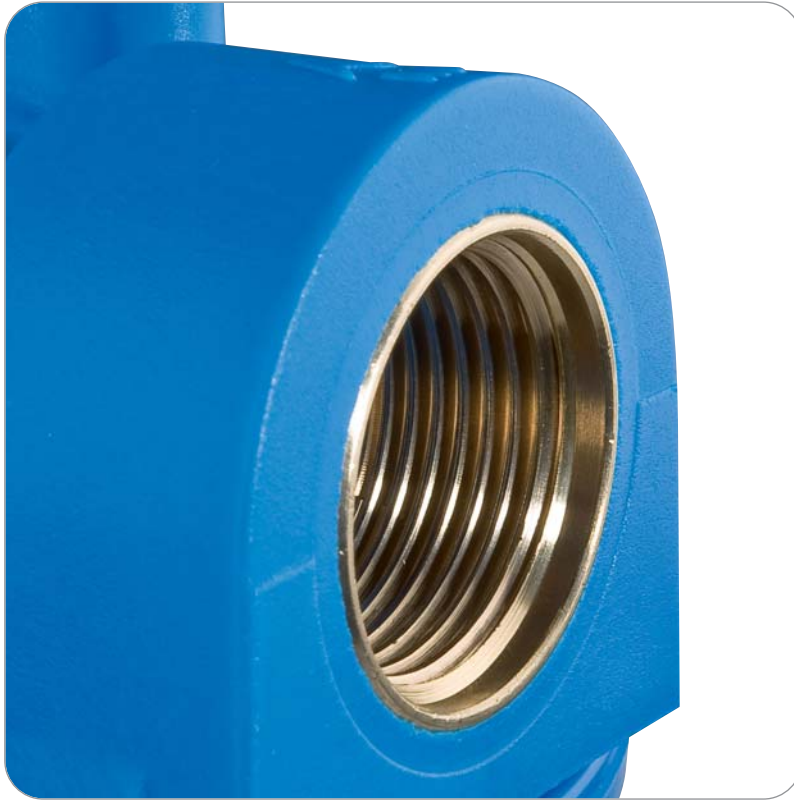


➤ **Single - Duplex - Triplex filters**





➤ clear / opaque bowl



➤ with/without brass inserts



➤ for hot water



➤ brass head



➤ metallic material

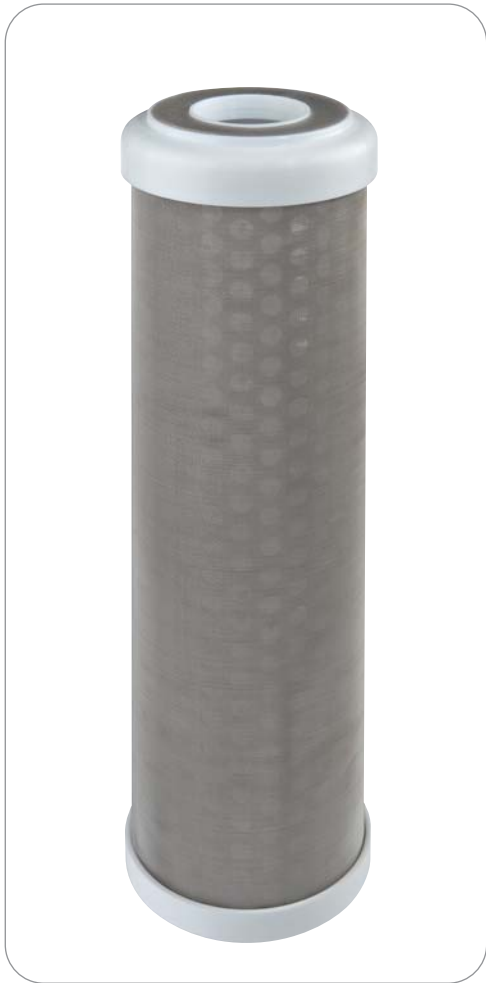
➤ multicartridge







➤ filtration in depth



➤ metallic nets





➤ plastic nets / other filtering media



➤ washable plastic net

SX



BX



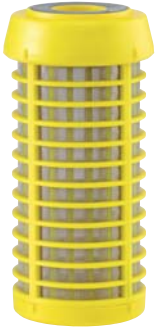
CX



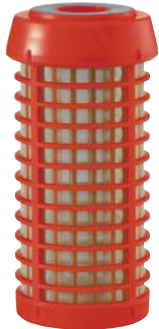
› sealing systems



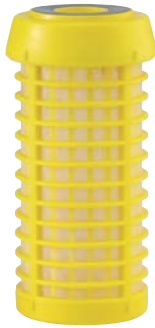
➤ self-cleaning filters



RAH



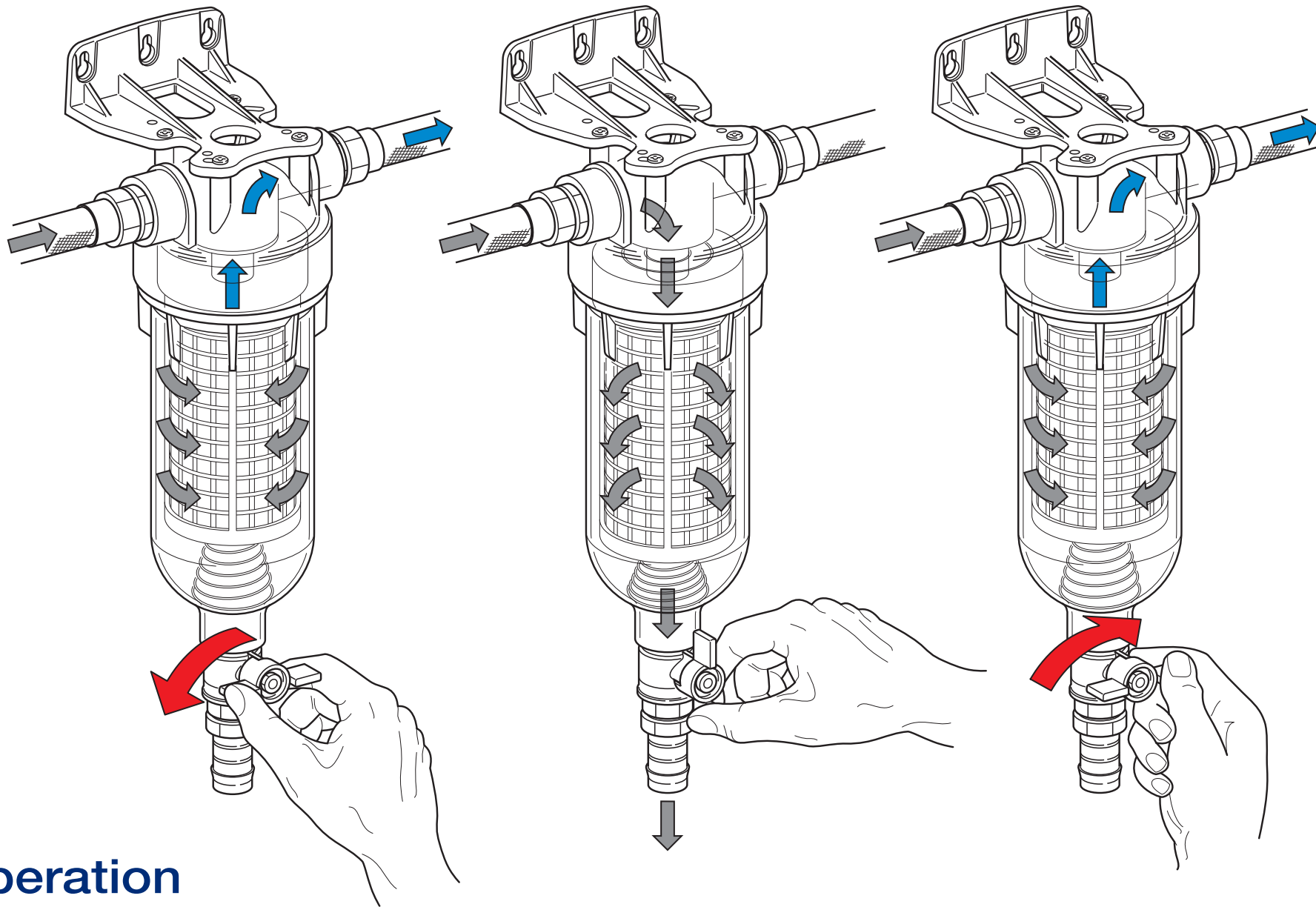
RAH  
HOT



RLH



RSH

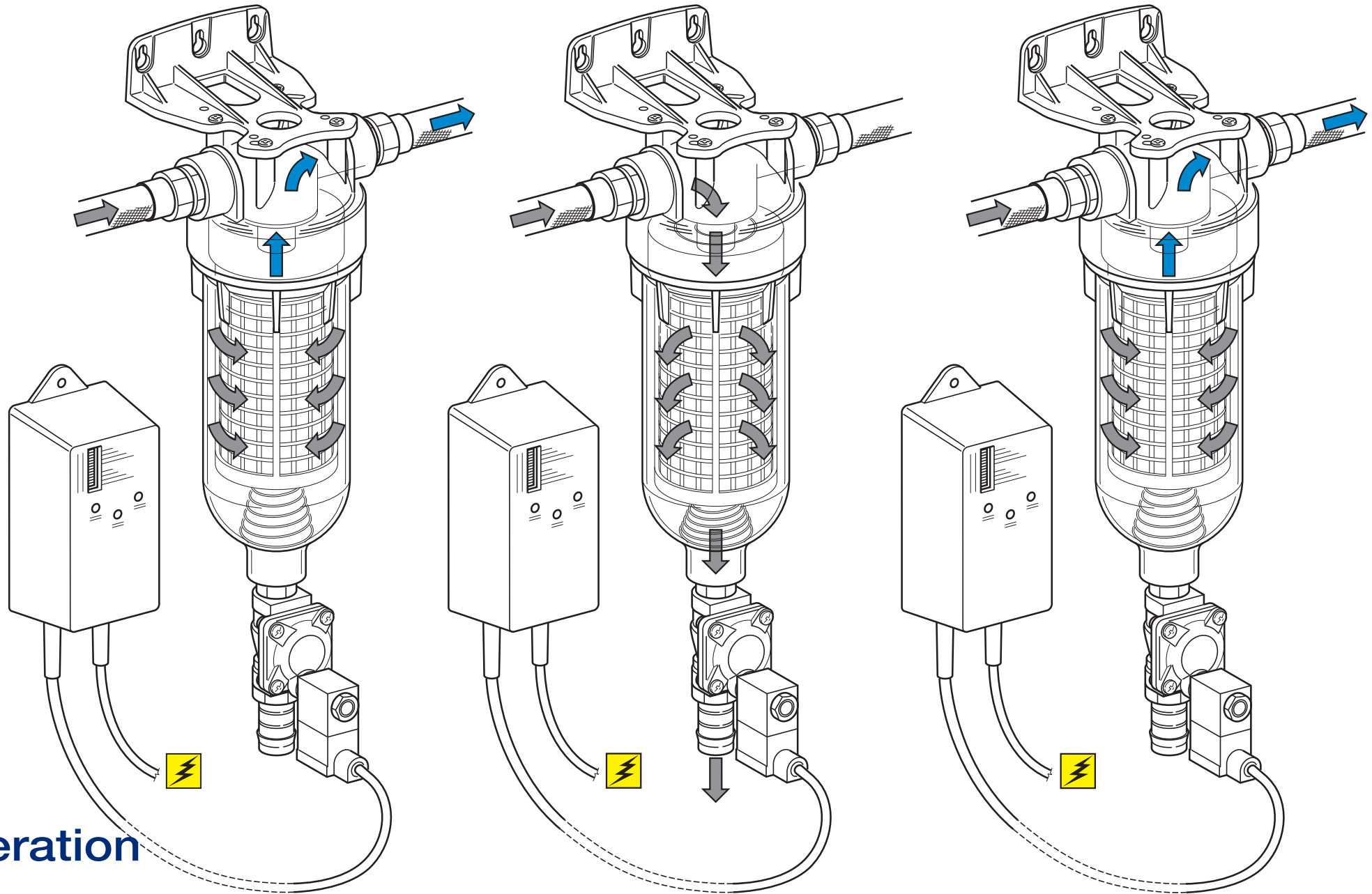


## › operation

## ➤ KIT AUTO







➤ operation